

Scan the QR code to
learn about KKL-JNF



Classroom group game
30 players
Instructor's guide
English

**TREE
VIA**



TreeVia: Instructions for a Classroom Game



What is in the kit:

A large tree to be assembled, a deck of big cards, tokens (leaves in six colors, five of each color / flowers / almonds), 6 treasure maps, 6 cards with group numbers, an instruction manual.

Participants:

30 students (in 6 groups of 5).

Game Time:

About 45 minutes (or until the tree fills up).

Goal:

To make the almond tree bloom and fill it with leaves, flowers and almonds.

1. Preparations and Division into Teams

- **The Equipment in the Center:** A big tree at the center of the classroom.
- **With the Guide:** A deck of big cards (questions, tasks, information, each card has a symbol for searching for the answer on the map).
- **With the Groups:** Each group sits around a table on which there are:
 1. **A treasure map: a big illustration containing the answers and hints.**
 2. **A card with the group number.**
 3. **Tokens (leaves, flowers and almonds) divided into groups.**
- **Division into Groups:** The guide walks around with an opaque sack in which there are leaves in 6 different colors (5 of each type). Each student pulls out an item; the students with the same item belong to the same group (If there is already a division into groups, you can skip this stage and distribute five identical leaves to each group).
- **In addition, the guide distributes to each group three flowers and three almonds.**

2. Course of the Game

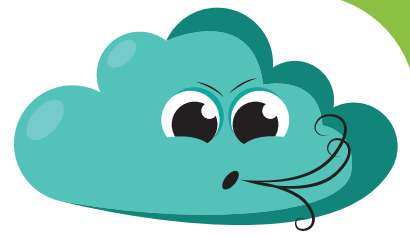
The game proceeds according to the order of the group numbers:

- Group number 1 begins.
- Afterwards, the term goes to Group 2, and so on until Group 6, and then back to 1.



קרן קיימת לישראל
KKL - JNF





3. The Course of the Game (the Group Round)

The guide addresses one group each time according to its number, but the entire class remains at the ready for a search.

Stage A: The Question and Answer

1. The guide draws a card and reads the question to the group whose turn has come (for instance, Group 1).
2. The guide takes care to conceal the symbol that appears on the card at this stage.
3. The students of each group consult and answer out loud. (If the group does not know: It declares "pass", and the right to answer passes to another group that raises its hand and the guide chooses one).

Stage B: The Reveal and Search

After an answer is given (whether correct or incorrect), the guide turns the card and reveals the large symbol that appears on it to the entire class.

1. Everyone Searches: All the groups in the class (1 through 6) need to quickly search for this symbol within the search maps on their tables.
2. Verifying the Answer: Near the symbol on the map, the correct answer is written / drawn.

Stage C: Giving Out Points

- **If the group, whose turn it was to play, answers correctly:** It receives confirmation from the map and wins the right to place a token (leaf / almond / flower) on the main tree.
- **If the group answers incorrectly:** The "opposing" group (any other team in the classroom), who found the symbol first on the map and shouted out the correct answer, is the one that wins the point and places the token on the tree.

4. Additional Types of Cards in the Deck

- **Task Cards:** The guide reads the task to the group whose turn it is to play. The group must carry it out (for instance: "create a human statue"). Successful execution wins them the right to place a token on the tree.
- **Information Cards:** The guide reads out an interesting fact to everyone. The group whose turn it was, places a token on the tree.
- **Special Cards:**
 - Worm: The group whose turn it is to play must remove its leaf from the tree.
 - Wind: Skip the next group in line and go to the group that has the least tokens on the tree (if some groups are tied with the same number, go to the first group in numerical order).
 - Bee: The group whose turn it is to play chooses another group and gives it a token as a "gift".

5. End of the Game and Winning

The game ends when one of the groups manages to decorate its branch with all the necessary leaves, flowers and almonds.

Answers to Questions

1. The Canadians have the maple tree leaf on their flag, a coconut palm represents the Maldives and Yemen has the Dragon Tree.

What is the national tree of Israel?

A: The Olive Tree.

2. The symbol of KKL-JNF is a story in color of concern for the land, water reclamation and the creation of a green environment. What are the appropriate colors?

A: Brown, Blue and Green.

3. The tallest tree in the world reaches 115 m – the height of 69 basketball players standing one on top of the other. What is the tree called?

A: Sequoia.

4. The unit of measurement for gems and gold is called a karat, and it is determined according to the weight of the seeds of which Israeli tree?

1. Carob

2. Oak

A: Carob

5. True or false – there are over 50,000 species of trees in the world.

A: False, there are over 100,000.

6. Do plants always need soil?

1. There is no way to grow plants without soil.

2. Plants can be grown without soil and without sunlight and even at home in a densely built city in a method known as "hydroponics".

3. There are air plants that don't receive nutrients and water from roots. In nature, they grow on trees or rocks.

A: Answers 2 and 3 are correct.

7. Which of the Seven Species gives power to muscles, strengthens the bones and is low on fat – the perfect energy snack?

A: Dates.

8. Which city in the world was defined as the "Capital of Veganism"?

A: Tel Aviv.

9. True or false – KKL-JNF has planted less than 200 million trees since its establishment.

A: False, KKL-JNF has planted over 240 million trees in Israel.



10. I purify and restore water reservoirs, generate power and energy from the sky and color the Land of Israel green by planting trees and protecting green areas.

Who am I?

A: KKL-JNF.

11. In what song does this phrase appear:

"To be a free nation in our own land, The land of Zion and Jerusalem."

A: HaTikva. The National Anthem of the State of Israel.

12. Which biblical verse symbolizes the connection between man and flora, particularly the trees?

A: "As man is the tree of the field".

13. What custom do Tu BiShvat and Passover have in common?

A: Conducting a Seder.

14. What is the only place on earth in which they speak a language that was born 3,000 years ago and which uses a currency with the same name as 3,000 years ago?

A: Israel

15. True or false?

1. In Kibbutz Ketura in the Arava there is a date tree: 1. That sprouted from a seed that was created using advanced futuristic technology for seed improvement. 2. That sprouted from the seed of an original Land of Israel date that was over 2000 years old, which was found in archaeological digs in Masada.

2. True or false?

A: 1–True, 2–False.

16. What is the official national bird of Israel?

A: Hoopoe.

17. Only 1% of the water on the face of the earth is potable, and over a billion humans suffer from a shortage of drinkable water. In order to help, Israeli scientists invented:

1. A device that extracts water from the air!
2. A straw that purifies contaminated water.
3. A system that identifies water wastage from leaks by processing signals from satellites.
4. All answers are correct.

A: 4

18. Red, small and sweet, I was developed in Israel and was initially marketed as a healthy snack eaten in front of the television.

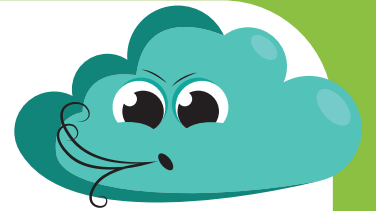
Who am I?

A: Cherry tomato.

19. What Israeli invention will prevent you from getting lost?

A: Waze.





20. What tree, which is able to grow under any conditions, transformed the Israeli wilderness green?

A: The pine tree.

21. What is the reason KKL-JNF invests in and supports research and development of agriculture in Israel?

1. In order to protect open green areas.
2. In order to increase the state's profits from the sale of crops abroad.
3. Out of an intent to win Israel a 14th Nobel Prize.

A: 1

22. What is the only "dead" language in the world that has been resurrected?

A: Hebrew.

23. What is the smallest desert in the world?

A: The Judean Desert in Israel, near the Dead Sea.

24. What 2 water reservoirs in Israel, of potable water and salt water, received the title of "lowest in the world"?

A: The Dead Sea and the Sea of the Galilee.

25. What Guinness record was set in the Ein Yahav communal farm in the Arava?

A: The world's largest pepper.

26. How many New Years are there in the Jewish tradition?

1. One – In the month of Tishrei.
2. Two – In Tishrei and Shvat (the New Year for trees).
3. Four – In Nissan, Elul, Tishrei and Shvat.

A: 4, one of which is Tu BiShvat, the new year for trees.

27. When will we celebrate the KKL-JNF's birthday?

1. It was established by the Zionist Congress as an entity to aid in the establishment of the State of Israel by purchasing lands and preparing them for settlement.
2. It was established upon the establishment of the state for the purpose of restoring nature in Israel.

A: 1

28. Thanks to KKL-JNF's tree plantings, Israel is one of the only countries in the world in which the current number of trees exceeds the number of trees it had 100 years ago.

True or false?

A: True

29. What was the purpose of the Blue Box in the photo (picture / photo of a Blue Box)?

1. To file complaints about contaminated regions.
2. To collect donations for the purchase of land and Zionist education.
3. To decorate the home or school.

A: 2.

30. What star do we use to charge the phone?

A: The sun.

31. From what plant do we make a drink that is used for kiddish on Friday Night?

A: Grape



32. Which of the Seven Species is used to make bread?

A: Wheat

33. What candy is made from almonds?

Chocolate, sorbet, marzipan or caramel.

A: Marzipan

34. How old is the oldest tree in the world?

- A. About 50 years old.
- B. About 500 years old.
- C. About 5000 years old.

A: C. The oldest tree with the same trunk is about 5400 years old and there is a Cypress tree whose roots are about 9500 years old!

35. True or false? Trees do not age!

A: True. Without parasites and insects or humans to cause them damage, trees can live forever. They don't die of old age.

36. Who am I? I entered National Geographic's list of the best and toughest treks in the world. I am 1,000 km long and I pass through unique and important sites in the country I am in.

Answer: The Israel Trail! 40 overnight camping parks of KKL-JNF are located along the Trail.

37 Who am I? One of the gifts you received from the trees, the people of Israel are also known as the people of the _____.

A: book! In Israel, more books are published per capita than anywhere else in the world.

38. True or false? Israel is a global power on bird migration and its location is a junction in which birds stop to rest on their way.

A: True! Half a billion birds arrive every year at the KKL-JNF Visitor Center at Hula Lake.

39. True or false? The most common street name in Israel is "Ben Gurion".

A: False! The Olive is the most common and is found in over 200 localities.

40. True or false? Israelis consume more fruits and vegetables in relation to the population relative to any other nation in the world.

A: True! Although it sounds healthy, the average Israeli also consumes 10 liters of ice cream every year.

41. True or false? KKL-JNF invented a method for collecting rainwater in cities and purifying them using the "Green Basins" method and returning them to nature.

A: True!

42. How many Israeli citizens won the Nobel Prize as of 2025?

A: 14! Most in chemistry but also in economics, literature and peace.

43. True or false? The Knesset was born on Tu BiShvat 1949 and celebrates its founding every year on the New Year for trees.

A: True!

44. What fruit is used to make the oil with which the Menorah in the Temple was lit?

A: Olive.

