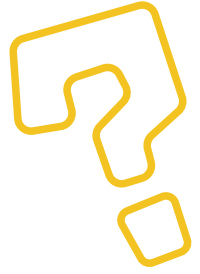


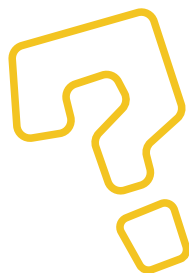


1



Canada has a maple leaf on its flag, the coconut palm tree represents the Maldives, the dragon blood tree symbolizes Socotra island, which belongs to Yemen. And what is the biblical-national tree of Israel?

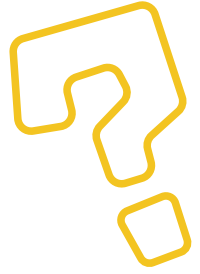
2



KKL-JNF's symbol tells a colorful story of nurturing the ground, water purification and creating a green environment.

What are its colors?

4

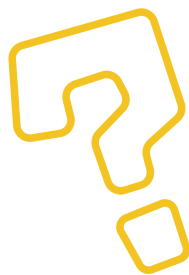


The unit of measurement for gem stones and gold is called a carat. Its origin is in the weight of the seeds of a very common tree in Israel.

Which tree is it?

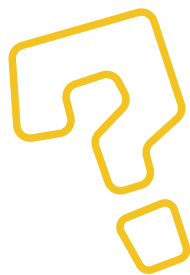
1. Carob
2. Oak

5



There are over 50 thousand types of trees in the world.

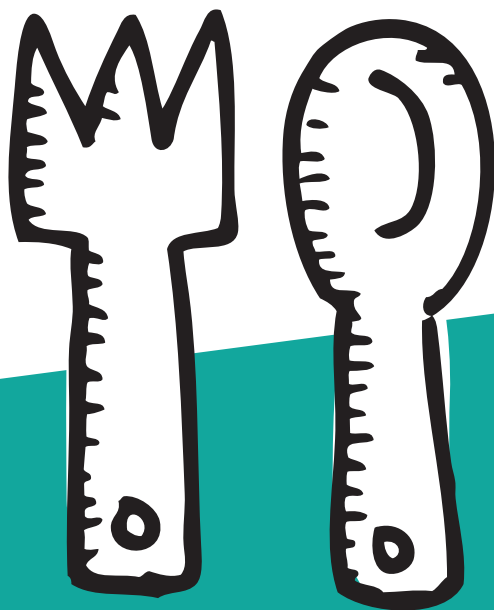
True or false?



Do plants always need earth?

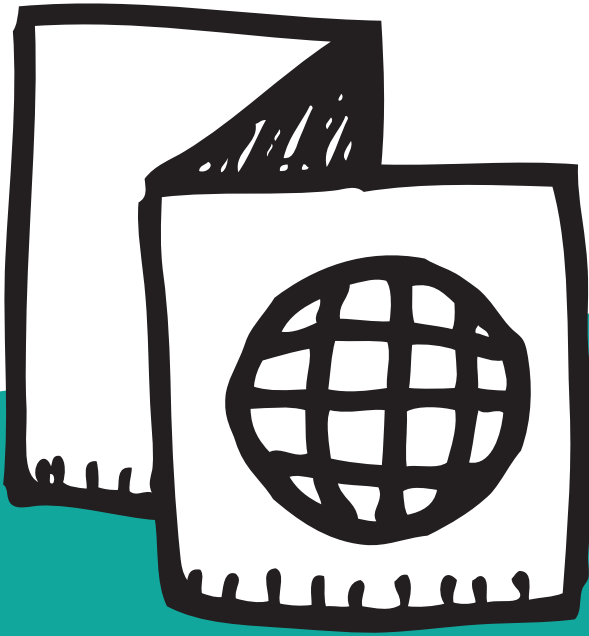
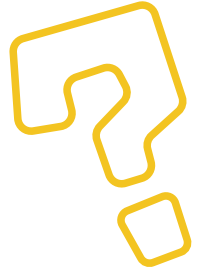
1. There's no way to grow plants without earth.
2. It is possible to grow plants without earth and without sunlight, even in a crowded city home using a method called "hydroponics."
3. There are air plants that don't receive nutrients and water through the roots. In nature they grow on trees or rocks.

7



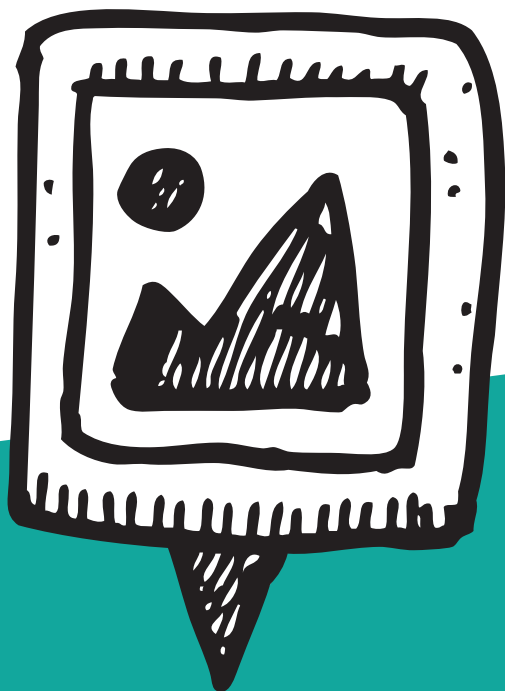
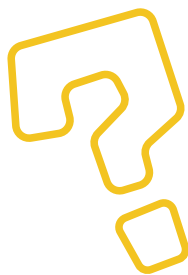
Which of the Seven Species energizes the muscles, strengthens the bones and is low in fat – the perfect energy-boosting snack?

8



Which city in the world has been crowned “Vegan capital of the world?”

9



Since its foundation, KKL-JNF has planted less than 200 million trees.

True or false?



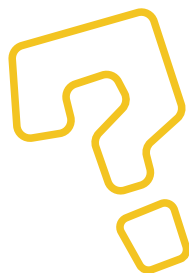
10



I purify and rehabilitate water reservoirs, create power and energy from the sky, and color Israel green by planting trees and preserving green lands.

Who am I?

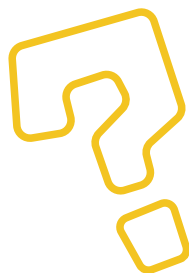
11



Which song has the following phrase:

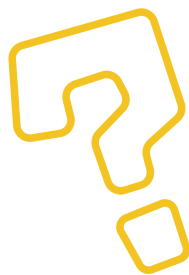
“To be a free people in our land, the  
land of Zion and Jerusalem?”

12



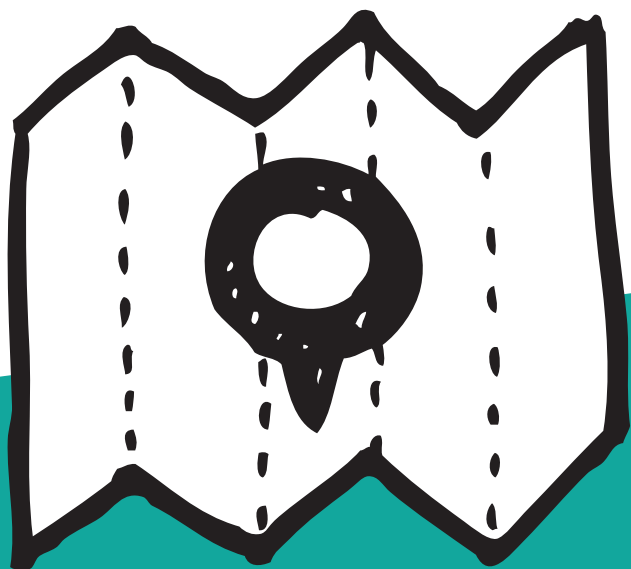
Which biblical phrase symbolizes the connection between mankind and vegetation, and trees in particular?

13



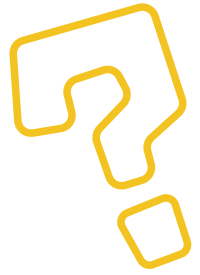
What custom do Tu BiShvat and  
Passover have in common?

14



What's the only place on earth where people speak a 3000 year-old language and use a coin that carries the same name as it did 3000 years ago?

15

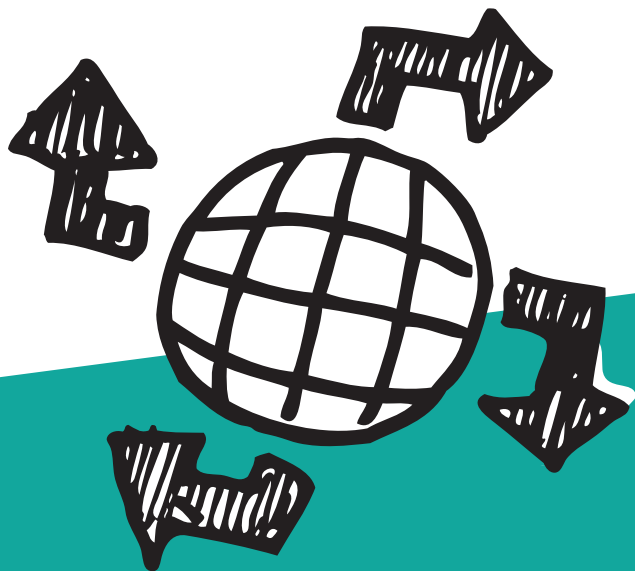
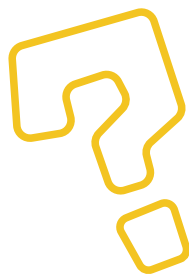


In the kibbutz of Ketura there is a date palm that:

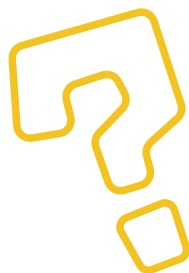
1. Germinated from a seed that was created with advanced futuristic technology of seed enhancement.
2. Germinated from the seed of an original Israeli date from over 2000 years ago, which was found during archaeological digs in Masada.

True or false?

16



What is Israel's national bird?



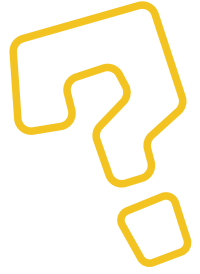
Only 1% of water on earth is drinkable, and over a billion people suffer drinking water shortages.

In order to help, Israeli scientists have invented:

1. A device that creates water out of the air!
2. A straw that purifies contaminated water.
3. A system that identifies water waste from leaks by processing satellite microwave signals.
4. All of the above.



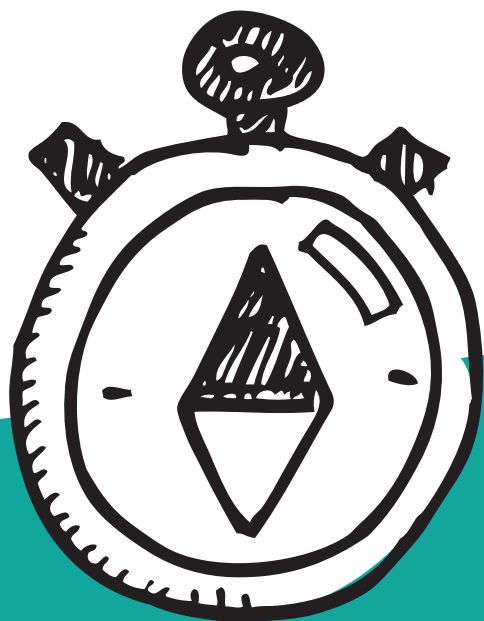
18



Small, red and sweet, I was developed in Israel, and at first I was marketed as a healthy snack to munch on in front of the TV.

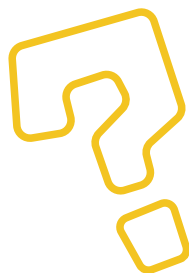
Who am I?

19

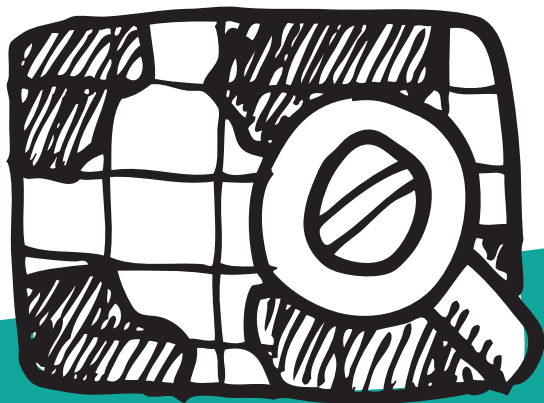


Which Israeli invention will prevent you from getting lost?

20



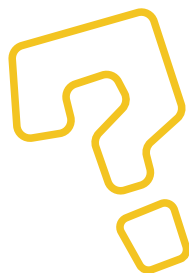
Which tree that can grow in any condition, has turned Israel from desolate to green?



What is the reason KKL-JNF invests in and supports research and development of agriculture in Israel?

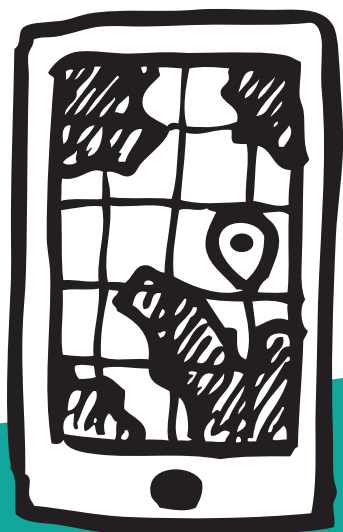
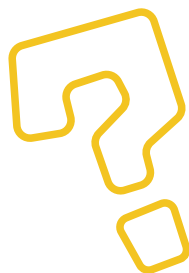
1. To preserve open green landscapes.
2. To increase the country's profits by exporting produce.
3. To try and win Israel its 14th Nobel prize.

22



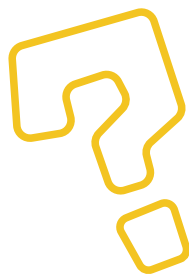
What is the only "dead" language in the world that has been resurrected?

23



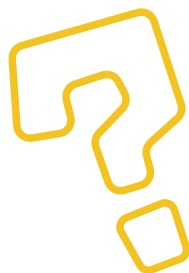
What is the smallest desert on earth?

24



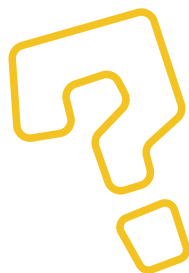
Which two water reservoirs in Israel, of sweet water and salt water, won the title “Lowest on earth?”

25



Which Guinness world record was set in Moshav Ein Yahav, in the Arava desert?





How many new years are there in the Jewish tradition?

1. One – in the month of Tishrei.
2. Two – in Tishrei and Shvat (new year of the trees)
3. Four – in Nissan, Elul, Tishrei and Shvat.



When do we celebrate the birthday of KKL-JNF?

1. It was established by the Zionist Congress as an entity that would aid in the establishment of the State of Israel by purchasing lands and preparing them for settlement.
2. It was established upon the establishment of the State for the purpose of restoring nature in Israel.



Thanks to KKL-JNF's efforts of planting trees, Israel is one of the only countries in the world where the number of trees is greater today than it was 100 years ago.

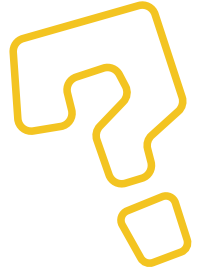
True or false?



What was this blue box in the picture before you used for?

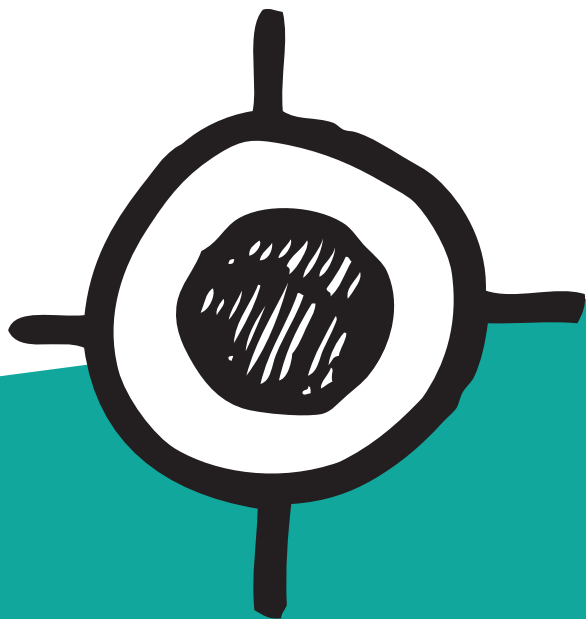
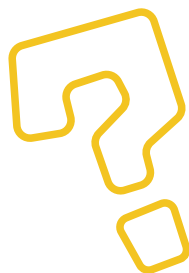
1. To collect charity for the needy.
2. To collect funds for the acquirement, development and afforestation of lands.
3. For filing complaints about contaminated areas.
4. For decorating the home or the classroom.

30



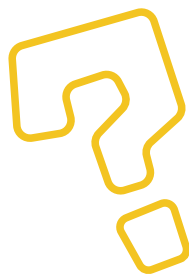
Which star do we use to charge our phones?

31



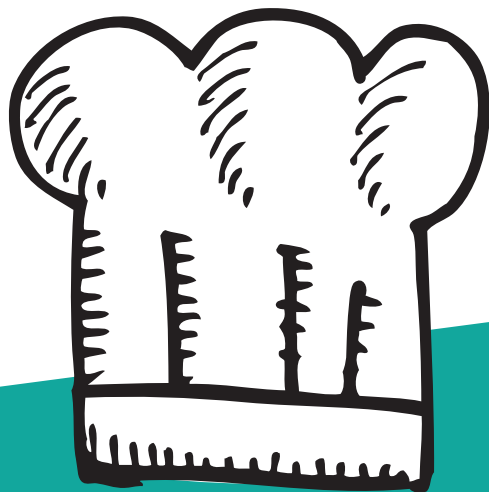
Which plant is used to make the drink on which we recite the Kiddush on Friday nights?

32



Which of the Seven Species do we  
use to make bread?

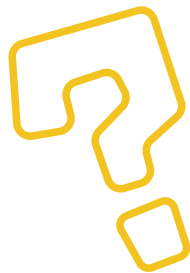
33



Which snack food is made out of almonds-  
chocolate, sorbet, marzipan or caramel?



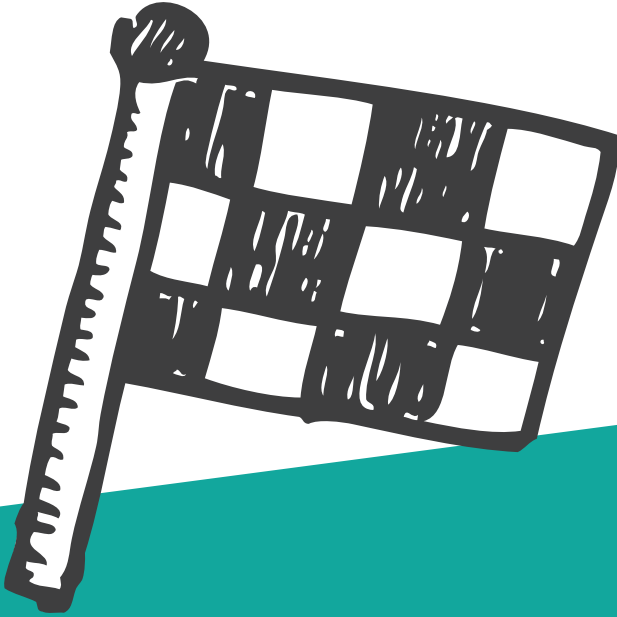
34



How old is the oldest tree in the world?

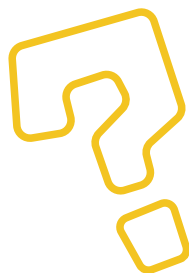
- A. About 50 years
- B. About 500 years
- C. About 5000 years

35



True or false?  
Trees do not get old!

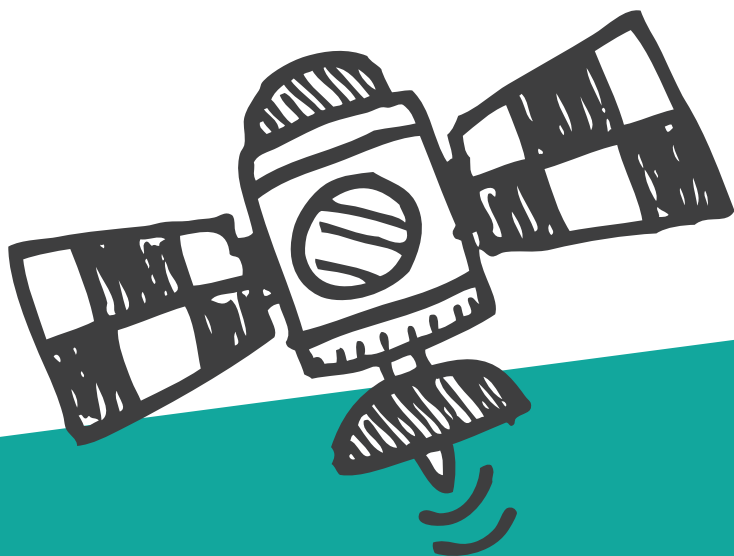
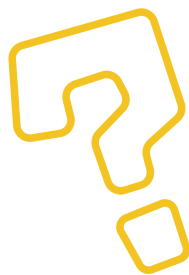
41



True or false?

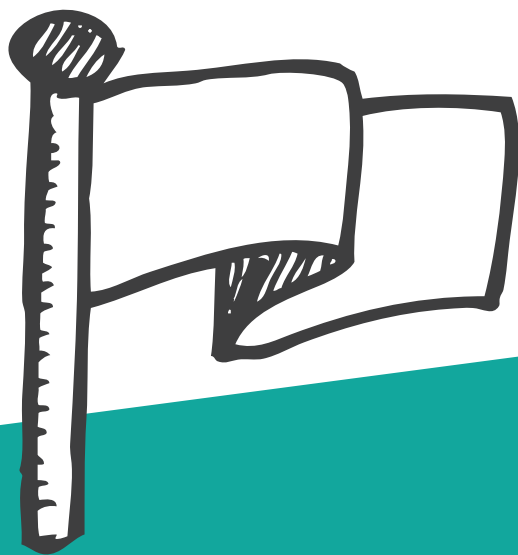
KKL-JNF invented a method for collecting rainwater in cities and purifying them using the "Green Basins" method and returning them to nature.

42



How many Israeli citizens won  
the Nobel Prize as of 2025?

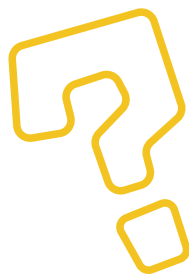
43



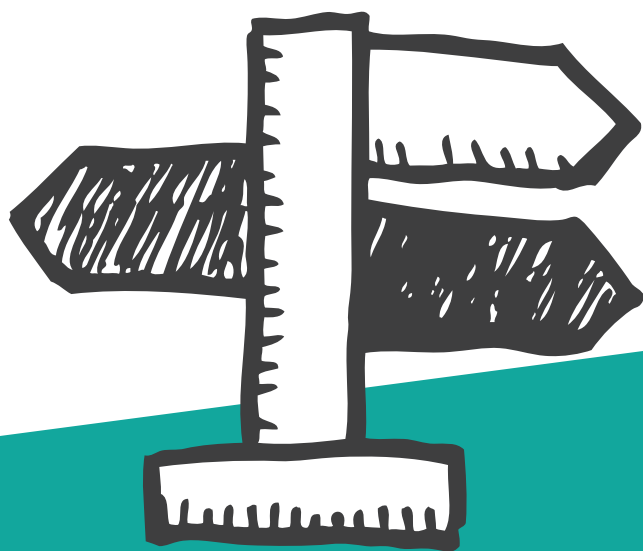
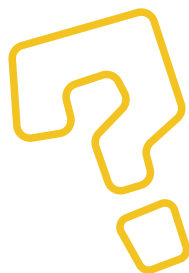
True or false?

The Knesset was established on Tu BiShvat 1949 and celebrates its founding every year on the New Year to the Trees.

44



Which fruit's oil was used to light the menorah in the Temple?



Who am I?

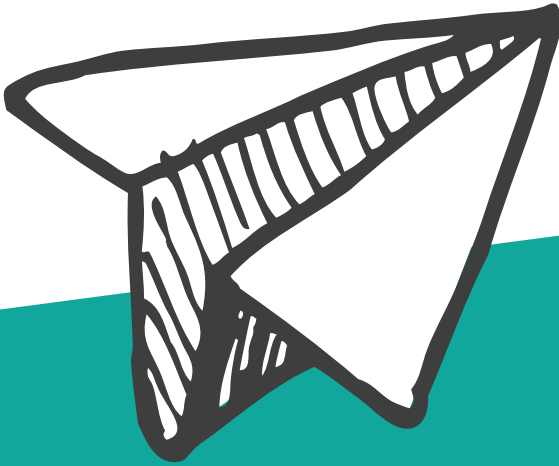
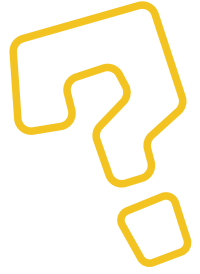
I got on to National Geographic's list of the 20 best and toughest hiking trails in the world. I am 1,000 km long and go through important and special locales of the state I am in.



Who am I?

One of the gifts you received from the trees, the People of Israel are also called the People of the \_\_\_\_.





True or false?

Israel is a global power of bird migration and its location is at a crossroads where the birds stop on their way.

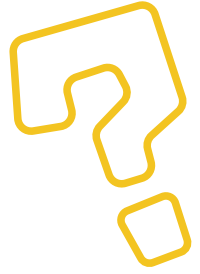
39



True or false?

The most common street name  
in Israel is "Ben-Gurion".

40



True or false?

Israelis consume more fruits and vegetables in relation with the population of any other nation on earth.

3



The tallest tree in the world reaches a height of 115 meters – the height of 60 basketball players stacked one on top of the other.

What's the name of the tree?



**All of KKL-JNF's forests are open to the public 24/7, and have over 1000 parking lots with playgrounds and tables. A big portion of the parking lots is accessible for the disabled.**



**The most common street name  
in Israel is “HaZayit.” There are  
124 streets with that name.**



**Would you agree to drink seawater?**

**In the past, there wasn't enough drinking water in Israel, and today the seawater is turned into drinking water. This process is called desalination. Most of the drinking water in Israel (around 80%) comes**



**Israelis consume more fruits and vegetables per capita than any other nation in the world. That may sound healthy, but the average Israeli also eats 10 liters of ice cream every year!**





**Desertification is a dangerous phenomenon – when the desert spreads to its surrounding areas. KKL-JNF decided to battle this phenomenon with a method that's widely used nowadays all over the world – they plant trees to collect surface runoff water, and turn the desert into a savanna.**



**KKL-JNF invented a method that collects rainwater in cities, purifies them using the “constructed wetlands” method in a special facility called a bio-filter, and returns the water back into nature.**



**13 Israeli citizens have won Nobel prizes so far. Most in the field of chemistry, but also in economics, literature and prizes for peace.**



**Using your body, you have one minute to create a sculpture of one large tree. You must use all members of the group! Create roots, a trunk, and branches. The statue must stand up stably for ten seconds. Get to it!**



**Tour your surroundings and find five useful things made out of wood and bring it to the center of the table. You have one minute, get to it!**



**You have two minutes to decide together upon one true statement and one false statement regarding nature. Present them to the class, if you manage to confuse another group you win the right to put a token on the tree!**



**The chlorophyll is the green color in leaves. Each member of the group must touch another green object in the classroom (on backpacks, clothing, walls). You have 30 seconds, you have a green light to begin!**



**Fruit salad! Each member of the group in their turn must name a fruit that grows on a tree. You may not repeat a fruit that was already said! You must complete a full round within just ten seconds. Ready? Go!**





**A task for all the groups! Get your pencil cases out! You must build together the biggest trunk, made only out of the equipment available in your pencil case. The tower must stand on its own without you holding it up for ten seconds, good luck!**



**Trees come in different sizes.  
You must stand in a line from  
the shortest to the tallest. But!  
You must not say a word, and  
you must not motion with your  
hands. You have 20 seconds,  
get to it!**



**Trees can talk to one another!  
They do so through chemicals  
they transmit through the air or  
earth. Each member of the group  
must get the group guess as  
many of the following words  
without saying them in 30  
seconds: leaf, bird, Israel, water,  
tree, bicycle.**



**The only cause of forest fires in Israel is humans; most are acts of arson.**

**Try to think of a catchy phrase / slogan for maintaining rules of conduct in the forest.**



**A classroom task! Decide upon a single action that will help you combat the climate crisis and try implementing it over the next month. Write it down on a sign in the classroom.**



**The Seven Species are the crops mentioned in the Book of Deuteronomy, which describe the fertility and yields of the Land of Israel and are used in such customs as the hanging of the Seven Species in a Sukkah or eating the seven species on Tu B'Shvat.**

**Find the seven species in the illustration and say their names in Hebrew.**



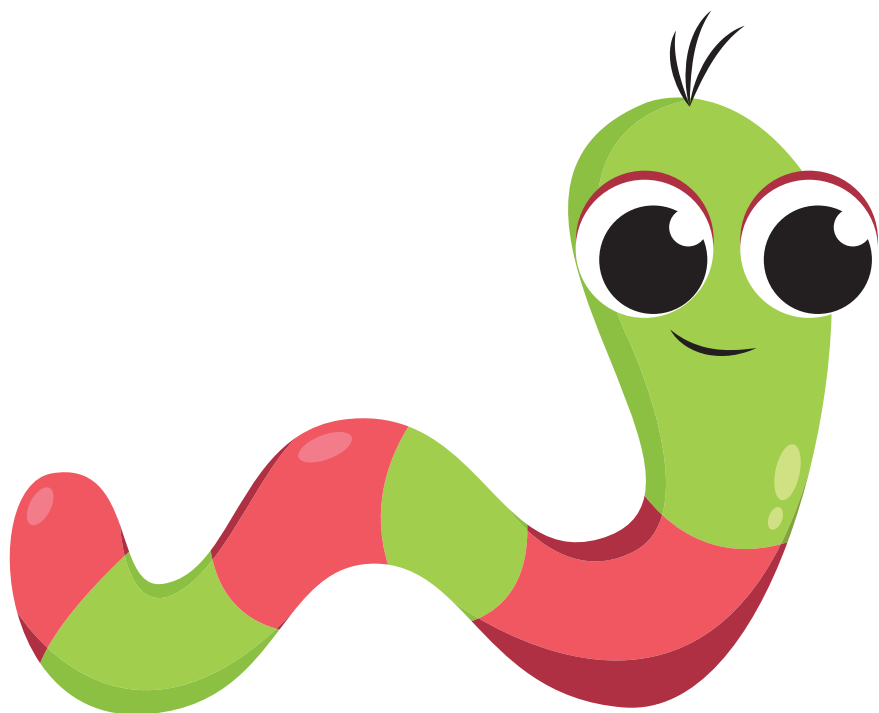
**The first forest that KKL-JNF  
planted was the Ben Shemen  
Forest.**

**It is a favorite among bicycle  
riders. Try to find 8 bicycle riders  
in the illustration. Point at the  
riders so you don't lose them and  
call the guide.**

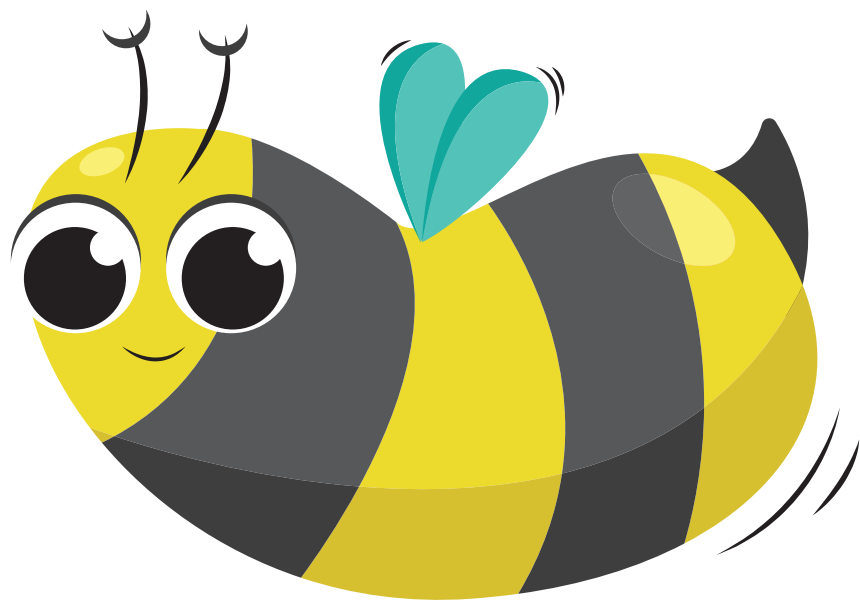
**You have one minute!**

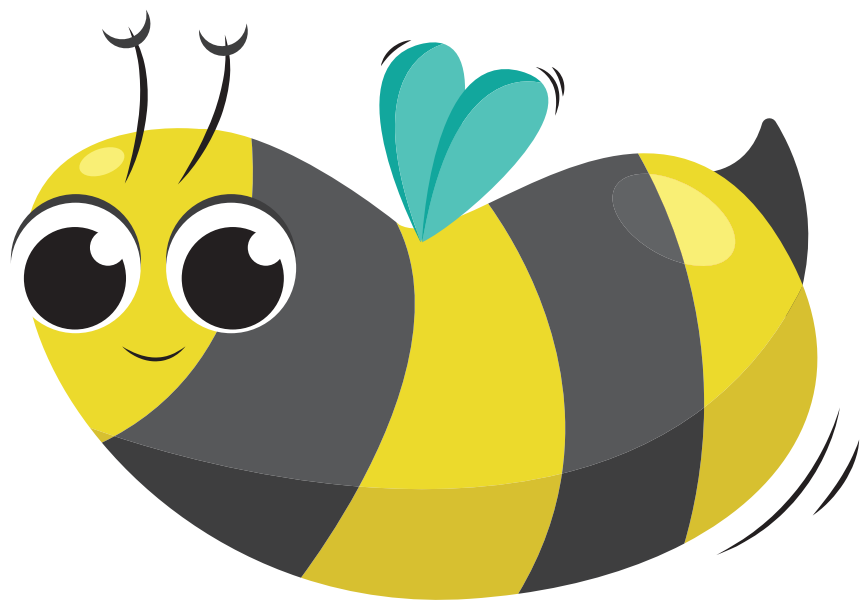


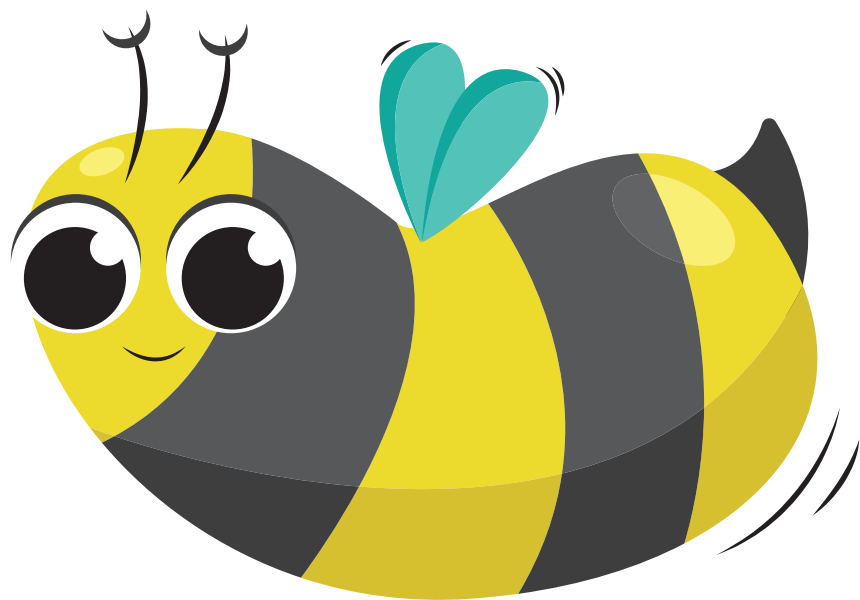


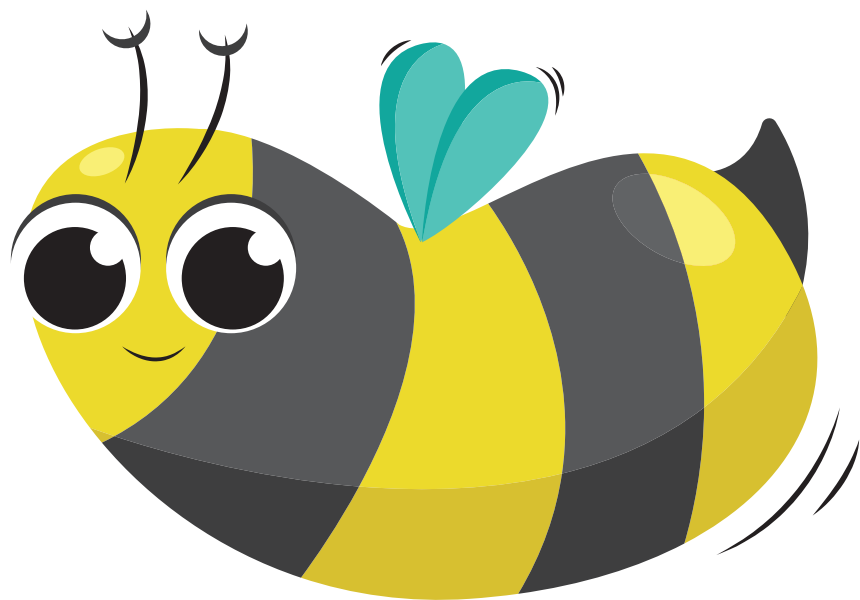


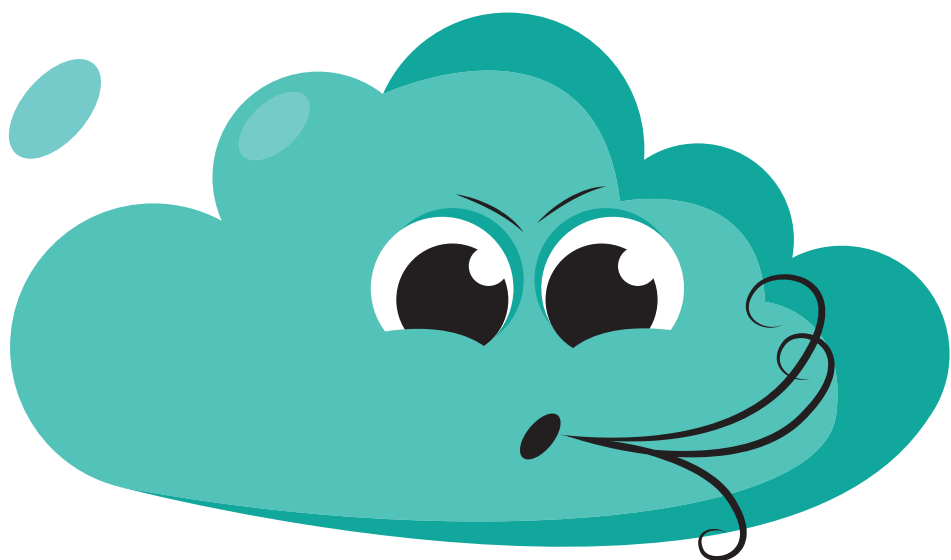


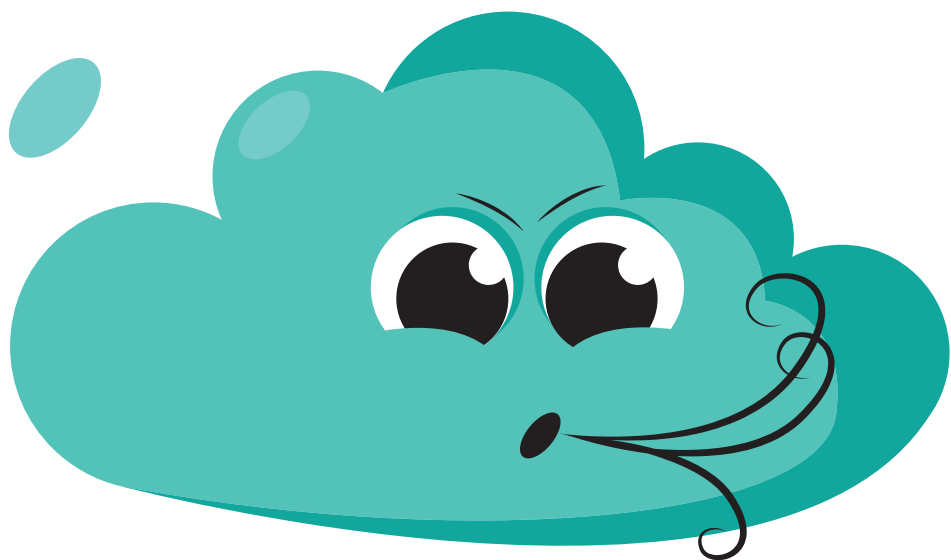




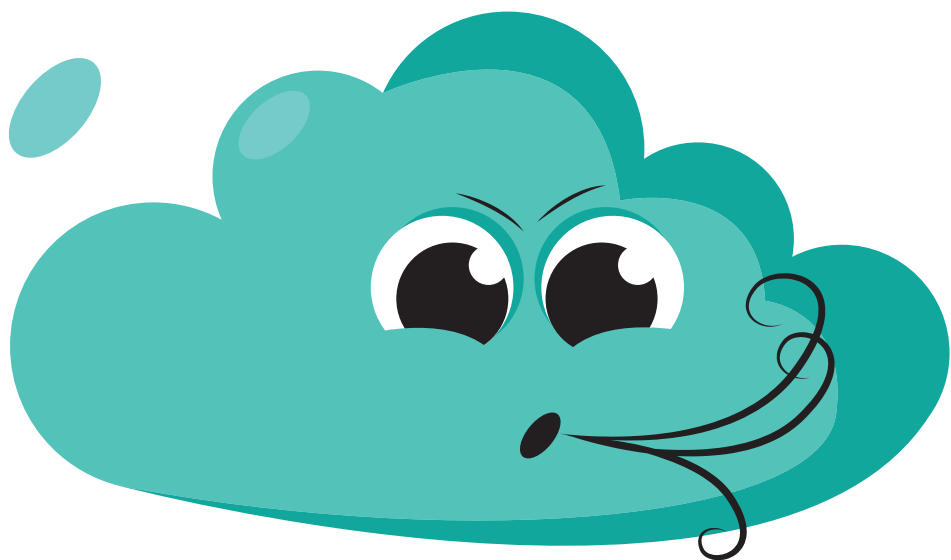


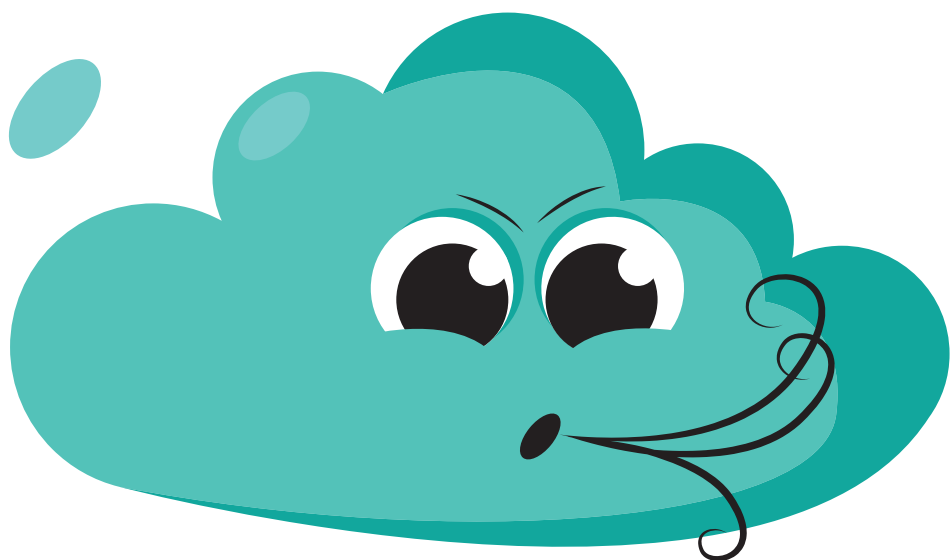


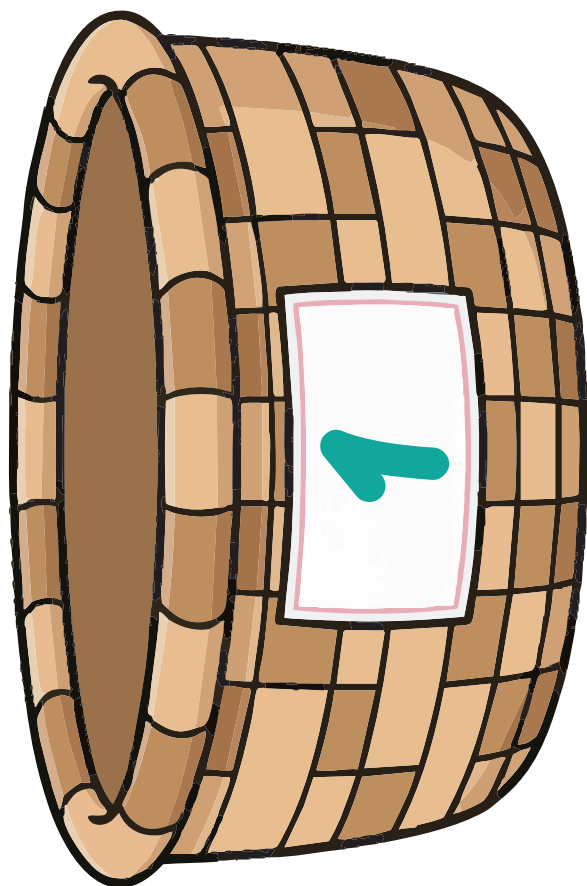


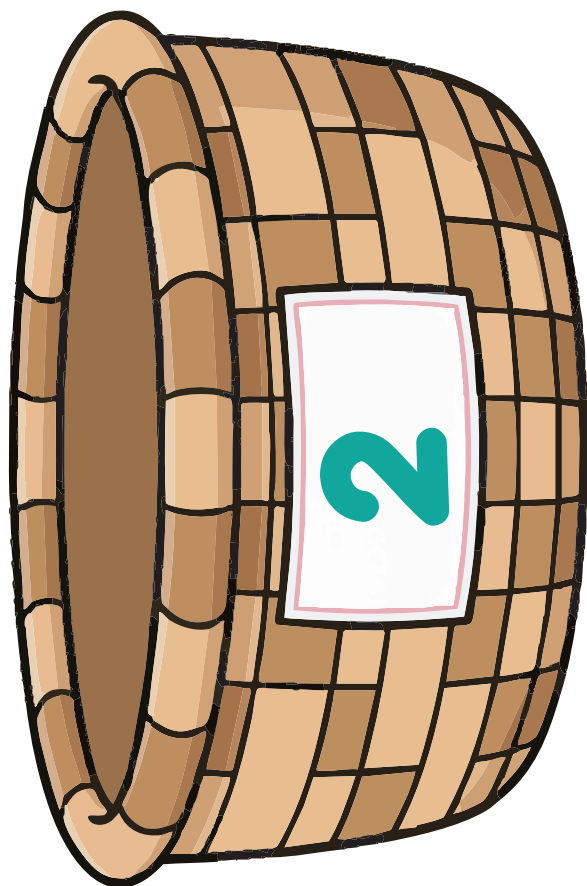


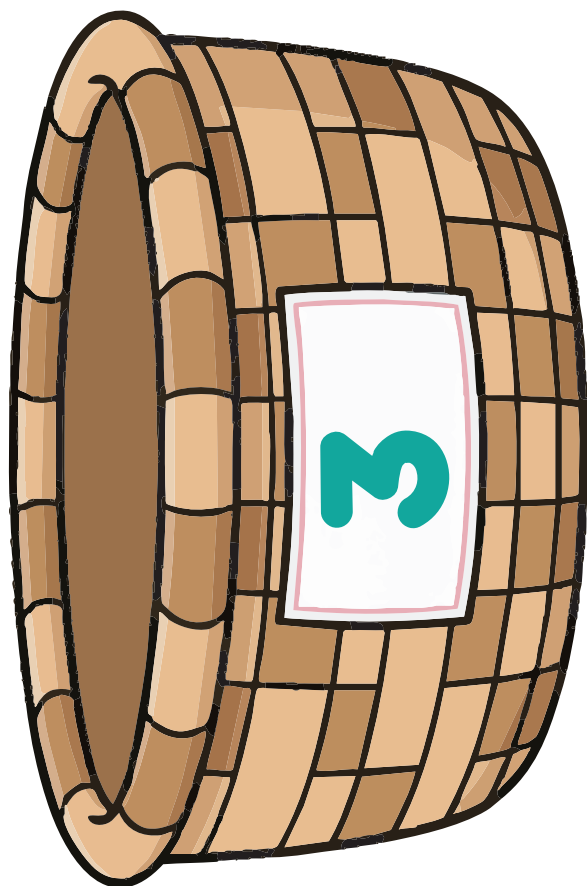


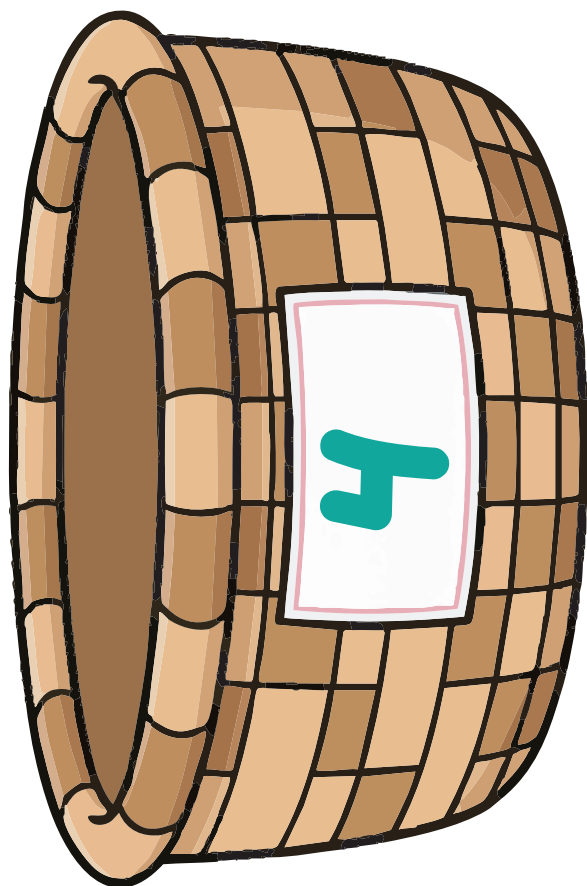


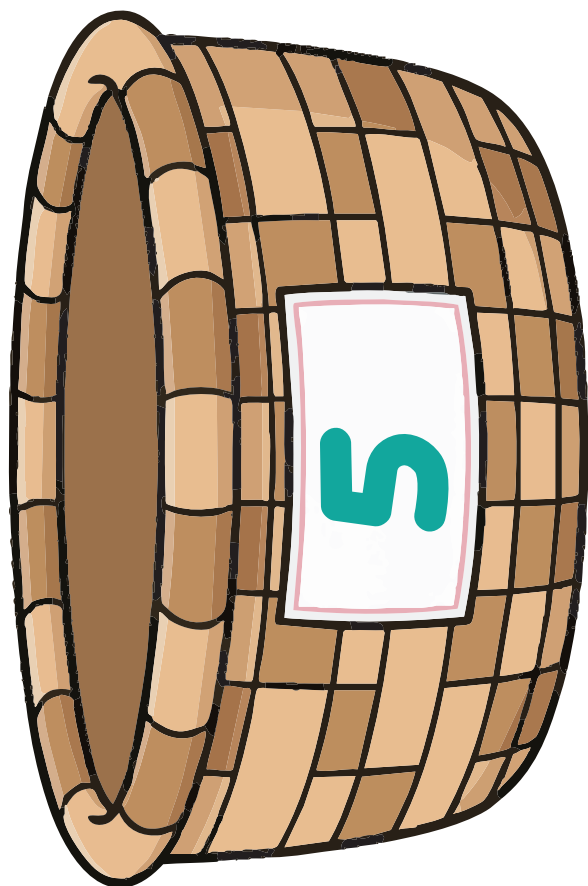














**The Israel National Trail made it on the list of top 20 best and hardest trails in the world according to National Geographic magazine. It's 1000 km and goes along the length of Israel through its special and important landmarks. Along the trail are 40 overnight parking**





**Trees are used to manufacture paper for printing books. In Israel, more books are published per capita than in any other country.**

**What are your 3 favorite books?**



**The meat industry is a great cause of pollution for the planet. Israeli researchers invented kosher steak that is printed using a 3D printer out of lab-made meat tissue.**



**Israel is a world power for bird migration. Because of its location between Europe, Asia and Africa, it serves as a “fueling” station for birds migrating from Africa to Europe and back.**

**Half a million birds arrive each year at the visitor center of KKL-JNF in Agmon Hula!**



**If it weren't for parasites and insects or humans that harm them, trees could live forever – they don't die of old age.**



**The shortest shrub in the world is the dwarf willow, measuring 1 to 6 cm. It grows in the arctic area.**



**KKL-JNF cleans and rehabilitates contaminated streams in Israel, and returns plant life and wild life back into rehabilitated nature. Is there a contaminated area around you that you would like to rehabilitate?  
Perhaps your room??**



**Israel is one of the world's record-holders for water recycling. In fact, 90% of wastewater – like the water that goes down the drain when you shower, is purified in Israel and used in the irrigation of vegetables and fruits.**



**Israel is a democratic state, and its legislative body is called “The Knesset.” The Knesset was established on Tu BiShvat of 1949, and celebrates its establishment each year on the New Year of the Trees.**